

Please read the below before ordering printed fabric for  
MTM Ejm Art Blouse/ Sweater garment designs

At Spoonflower only whole meters can be ordered.

<https://www.spoonflower.com/profiles/ejmart>

**Ejm Art MTM garment designs are created for best possible utility  
and economic buy.**

Due to fabric shrinkage, layplans are made to fit certain fabrics:

Layplan 1: \*Fabric amount: 142cm x 2 meters (56" x 78.74")

**MTM Ejm Art Blouse (short sleeves) & Sweater (long sleeves) size XS-XL**

For selected fabrics which shrink max: **width 4% / length 3%:**

- Modern Jersey (W:2-4%/L:0-1%)
- Performance knit (W:2-4%/L:1-2%)
- Performance Pique (W:1-2%/L:1-3%)

Layplan 2: \*Fabric amount: 142cm x 1 meter (56" x 41,66")

**MTM Ejm Art Blouse (ss) size XS-XL**

For selected fabrics which shrink max: **width 7% / length 11%:**

- Modern Jersey (W:2-4%/L:0-1%)
- Performance knit (W:2-4%/L:1-2%)
- Performance Pique (W:1-2%/L:1-3%)
- Organic Cotton Knit Ultra (W:5-7%/L:9-11%)

**!!! Always wash fabric before laying of pattern pieces!**

The above shrinkage is in accordance with Spoonflower's estimated guidance. "Max" shrink is as stated an estimate, which is why Ejm Art does not guarantee pattern fit for all sizes; Ejm Art is though not aware of any complaints in connection with discrepancies in material shrinkage and own tests have so far been successful. Ejm Art recommends to wash the fabric at 30° machine wash unless Spoonflower recommends, delicate wash, hand wash or dry-cleaning.

Please see the following video clips:

- How it works
- MTM-garment
- Assemble pattern
- Sewing guidance

The video's are available at [www.ejmart.dk](http://www.ejmart.dk)

At the "Tutorials" menu )

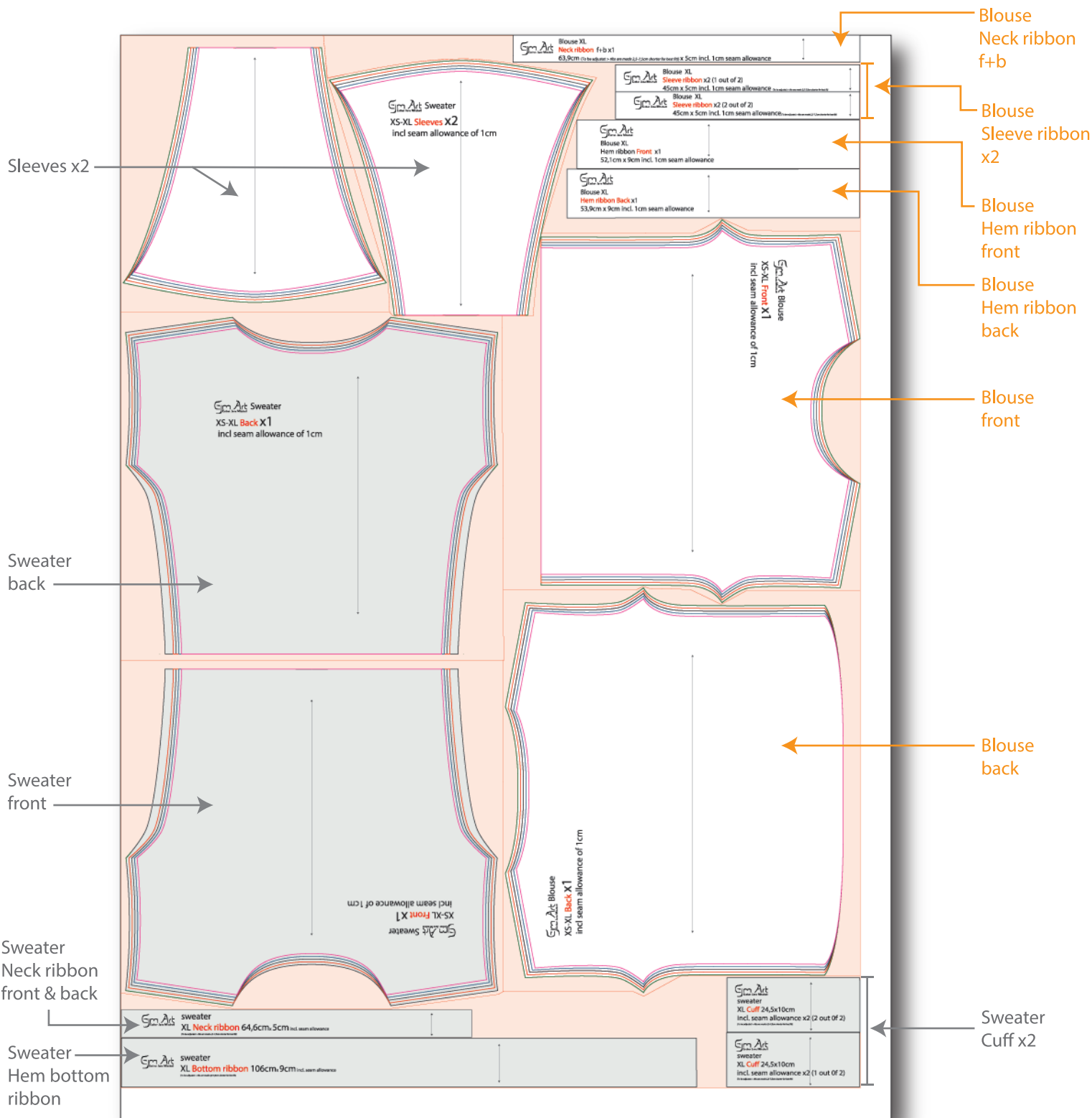
# LAYPLAN 1




Fabric amount: **142cm x 2 meters** (56" x 78.74")

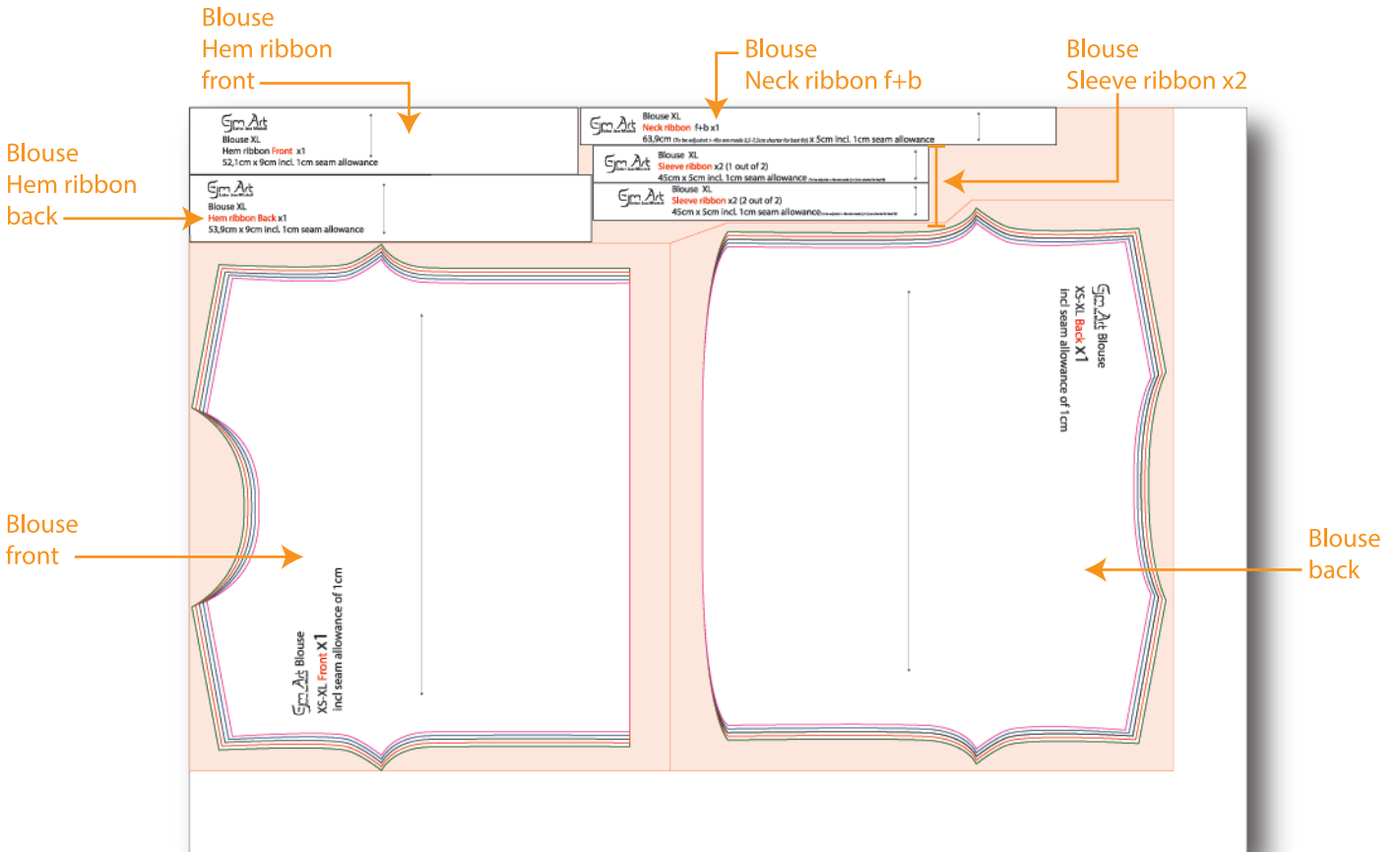
Fabric Shrink: **max W:4% / L:3%**



- Original fabric W/L
- After max shrinkage
- Ejm Art Sweater pieces
- Ejm Art Blouse pieces



Original fabric W/L	
After max shrinkage	
Ejm Art Blouse pieces	



DIY:  
Fits  
2x3 A4 Sheets

# Ejm Art Sweater

Esther Jane Mitchell

XS-XL at fold **Front** x1 + **Back** x1  
incl seam allowance of 1cm

**Neck, cuff & bottom hem ribbon** in self fabric incl.  
seam allowance

Width:

- bottom hem ribbon max 9cm wide
- neck ribbon max 5cm wide
- cuff max 10cm wide

Length:

Measure the above from your selected  
choice of size (XS-XL)  
> cut from fabric according to layplan  
> shorten ribbons in accordance to  
fabric

(amount typically lays between  
2,5cm -7,5cm)

for the "Modern Jersey" fabric the ribbons are  
shortened by 5cm

(for help see Ejm Art videoclip: "Tracing the pattern  
pieces" (timeframe: 2:53) and Ejm Arts videoclip  
"The actual sewing guidance of the Ejm Art Blouse"  
(timeframe: 2:58). Find the clips at ejmart.dk the menu  
Tutorials > Sewing Guidance

*(The sewing guide for the sweater is under construction,  
until its ready, the blouse can be a helpful guide for the  
sweater as well)*

**Additional materials to purchase:**

- Shoulder tape; 3mm width woven satin

# Ejm Art Sweater

Esther Jane Mitchell

XS-XL at fold **Sleeve** x2  
incl. seam allowance of 1cm

Center Front + Back + Sleeve FOLDLINE

\*Before attaching the cuffs, you can  
choose to customize the length  
of the sleeves

DIY:  
Fits  
2x3 A4 Sheets

# Ejm Art Blouse

Esther Jane Mitchell

XS-XL at fold **Front** x1 + **Back** x1  
incl seam allowance of 1cm

**Neck, sleeve & bottom hem ribbon in self fabric incl. seam allowance**

Width:

- bottom hem ribbon max 9cm wide
- neck ribbon & sleeve ribbon max 5cm wide

Length:

Take measures on the above from your selected choice of size (XS-XL)

> cut from fabric according to layplan

> shorten ribbons in accordance to fabric

(amount typically lays between 2,5cm -7,5cm)

for the "Modern Jersey" fabric the ribbons are shortened by 5cm

(for help see Ejm Art videoclip: "Tracing the pattern pieces" (timeframe: 2:53) and Ejm Arts videoclip

"The actual sewing guidance of the Ejm Art Blouse" (timeframe: 2:58). Find the clips at ejmart.dk the menu

Tutorials > Sewing Guidance

Tutorials > Sewing Guidance

**Additional materials to purchase:**

- Shoulder tape; 3mm width woven satin

\*Regarding length of hem ribbon, see measures incl. seam-allowance below:

**Front Hem Ribbon incl. seam allowance**

**Back Hem Ribbon incl. seam allowance**

**Ribbon in total without seam allowance**

XL	52,1cm
L	49,1cm
M	48,1cm
S	47,1cm
XS	46,1cm

XL	53,9cm
L	50,9cm
M	49,9cm
S	48,9cm
XS	47,9cm

XL	102cm
L	96cm
M	94cm
S	92cm
XS	90cm

**\*Sewing Guidance available at [www.ejmart.dk](http://www.ejmart.dk)**  
**> at the Tutorials menu**  
**> Sewing Guidance**

**\*Front piece to be gathered to fit Front-hem-ribbon**

**\*Back piece to be gathered to fit Back-hem-ribbon**

Center Front + Back FOLDLINE

